



SYNAGOGUE IN SARAJEVO

O ISTORIJI SARAJEVSKIH JEVIJEJA ...

U OVE KRAJEVE JEVIJEJI SE MASOVNIJE NASELJAVAJU POSLIJE IZGONA IZ ŠPANIJE 1492.GODINE.

PRVI PISANI TRAG O BORAVKU JEVIJEJA U SARAJEVU POTIČE IZ 1557.GODINE.

TO JE ZAPIS U «SIDŽILU» SARAJEVSKOG ŠERIJATSKOG SUDA IZ TE GODINE.

OD TADA PA DO POČETKA II SVJETSKOG RATA, BROJ JEVIJEJA U SARAJEVU SE POVEĆAVA, DA BI KONCEM 1940.GODINE IZNOSIO OKO 11.500 DUŠA.

U SARAJEVU SU U TO VRIJEME DJELOVALE:

- DVIJE JEVIJEJSKE OPŠTINE (SEFARDSKA I AŠKENASKA)
- PET SINAGOGA (ČETIRI SEFARDSKE I JEDNA AŠKENASKA)
- DVIJE OSNOVNE I JEDNA SREDNJA JEVIJEJSKA ŠKOLA,
- RABINSKI SEMINAR (NADALEKO POZNAT I PRIZNAT).

OSIM SEFARADA (POTOMAKA JEVIJEJA PROGNAJNIH IZ ŠPANIJE) U SARAJEVU ŽIVE I AŠKENASKI JEVIJEJI, KOJI SU U OVE KRAJEVE DOŠLI IZ SJEVERNE I ISTOČNE EVROPE.

BROJ AŠKENAZA U BIH ZNATNO SE POVEĆAVA OKUPACIJOM BOSNE OD STRANE AUSTROUGARSKE.

AŠKENAZI NASTANJENI U SARAJEVU SASTALI SU SE 24.SEPTEMBRA 1879.GODINE I ODLUČILI DA OSNUJU SVOJU VJERSKU OPŠTINU I SAGRADE HRAM, KAO I DA ANGAŽUJU JEDNOG HAZANA KOJI ĆE BITI PREDMOLITELJ I OBAVLJATI SLUŽBU PO AŠKENASKOM OBREDU.

ZEMALJSKA VLADA BOSNE I HERCEGOVINE JE U MARTU 1901.GODINE

ODOBRILA IZDAVANJE GRAĐEVINSKE DOZVOLE ZA IZGRADNJU HRAMA "AUSTRO - UGARSKE IZRAELITSKE VJERSKE OPŠTINE U SARAJEVU".



SARAJEVSKA AŠKENASKA SINAGOGA 1902 – 2002

30.SEPTEMBRA 1902.GODINE, ZAVRŠENA JE IZGRADNJA I IZVRŠENO OSVEĆENJE

PRVOG AŠKENASKOG HRAMA U SARAJEVU, DANAS JEDINOG HRAMA U BOSNI I HERCEGOVINI.

HRAM,ODNOSNO SINAGOGA, GRAĐENA JE U PSEUDOMAURSKOM STILU.PROJEKTANT JE BIO POZNATI KARL PARŽIK, AUTOR MNOGIH ZGRADA U SARAJEVU.UNUTRAŠNJA OBRADA I OSLIKAVANJE SINAGOGJE DJELO JE LUDWIGA OISNERA.

OSVEĆENJE SINAGOGJE OBAVIO JE NADRABIN DR.SAMUEL VESEL.

IAKO GRAĐENA U PSEUDOMAURSKOM STILU, SA KARAKTERISTIČNE ČETIRI UGAONE KUPOLE I ORNAMENTALNIM RELJEFIMA NA FASADI ZGRADE,SINAGOGA SE ODLIČNO UKLOPILA U SREDINU, PRETEŽNO GRAĐENU U ORIJENTÁLNOJ STILU.

DVORANA U KOJOJ SE ODVIJA BOGOSLUŽENJE, SAGRAĐENA JE SA GALERIJOM, KOJA JE SLUŽILA ZA ŽENE. GALERIJA SE OSLANJALA NA DESET RELJEFNIH STUBOVA, IZLIVENIH OD MJEDI.

NA ISTOČNOJ STRANI , OKRENUT PREMA JERUSALEMU, SMJEŠTEN JE
ARON HAKODEŠ / ORMAR U KOME STOJI TORA /, KOJI JE ODVOJEN POPREČNIM ZIDOM
U KOJEM JE IZVEDEN VISOKI POTKOVIČASTI LUK IZ KOJEG SE EFEKTNO ISTICALO » SVETIŠTE «.
GODINE 1927, U POVODU PROSLAVE 25-GODIŠNJICE SINAGOGA, ISTA JE TEMELJITO REKONSTRUISANA,
A 1933. GODINE SA NJENE ZAPADNE STRANE SAGRAĐENA JE ZGRADA ZA SMJEŠTAJ ADMINISTRACIJE
AŠKENASKE JEVREJSKE OPŠTINE, BIBLIOTEKE, STANA ZA RABINA I OSTALE PRATEĆE SLUŽBE.
POVODOM OBILJEŽAVANJA 400-TE GODIŠNJICE DOLASKA JEVREJA U BOSNU I HERCEGOVINU,
1964-1965. GODINE, SINAGOGA JE PREGRAĐENA PO VISINI, TAKO DA JE GORNJI SPRAT
OSPOSOBLJEN ZA RELIGIJSKI ŽIVOT, A PRIZEMLJE ZA DRUŠTVENI ŽIVOT ZAJEDNICE.
DANAS J.O. U SARAJEVU BROJI OKO 700 ČLANOVA
(SEFARDA I AŠKENAZA ZAJEDNO)

DANILO NIKOLIĆ,
PREDSJEDNIK JEVREJSKE OPŠTINE SARAJEVO



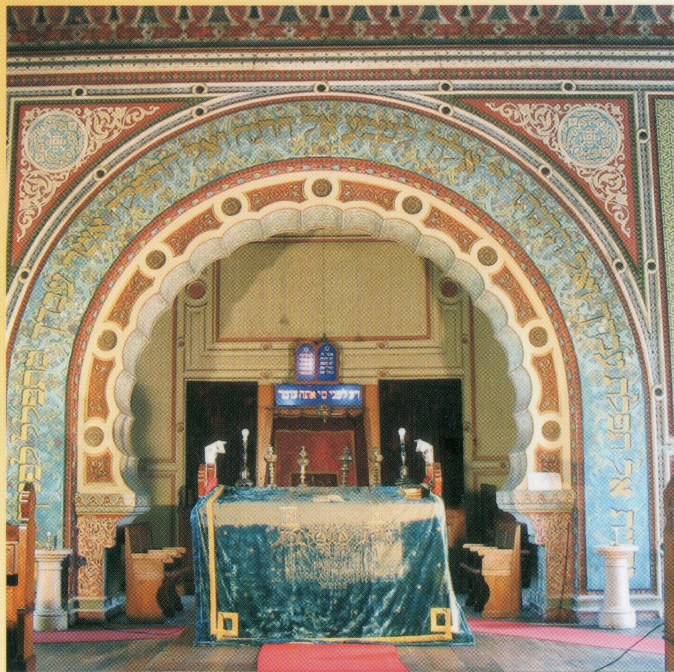
TURIZAM

POSJETA SINAGOGI JE SVAKIM RADNIM DANOM
OD 10 - 15 ČASOVA (SUBOTA I NEDELJA SU NERADNI DANI).

SLUŽBA U HRAMU SE OBAVLJA PETKOM UVEČE
I ZA SVE VELIKE JEVREJSKE BLAGDANE.

ADRESA: JEVREJSKA OPŠTINA SARAJEVO
HANDIJE KREŠEVLJAKOVIĆA 59.
TEL/FAX: (00) 387 33 663 - 472, 663 - 473

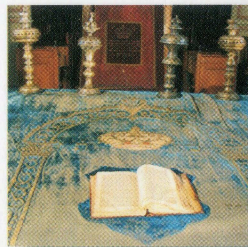
e-mail: la_bene@open.net.ba
[www. Open.net.ba/~la_bene](http://www.Open.net.ba/~la_bene)



THE "TEVA" AND "ARON HA-KODESH"

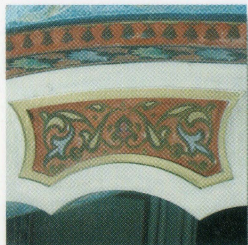


DETAILS





DETAILS OF THE
HORSHESHOW
SHAPED ARCH



VIEW OF THE MAIN ENTRANCE

ABOUT THE HISTORY OF THE SARAJEVO JEWS ...

THESE REGIONS WERE SETTLED BY JEWS ON A MORE MASSIVE SCALE AFTER EXPULSION FROM SPAIN IN 1492.

THE FIRST WRITTEN TRACE ABOUT EXISTENCE OF JEWS IN SARAJEVO COMES FROM 1557.

IT IS NOTE IN THE " CHRONICLE " OF THE SARAJEVO ISLAMIC CODE (SHARIA) FROM THE SAME YEAR.

SINCE THAT TIME TILL THE BEGINNING OF THE WORLD WAR II, THE NUMBER OF JEWS IN SARAJEVO INCREASED CONSTANTLY AND BY THE END OF 1940 THERE WERE ABOUT 11.500 JEWS IN SARAJEVO.

THE FOLLOWING INSTITUTIONS WERE ACTIVE AT THAT TIME IN SARAJEVO :

- TWO JEWISH COMMUNITIES (SEPHARDIC AND ASHKENAZI)
- FIVE SYNAGOGUES (FOUR SEPHARDIC AND ONE ASHKENAZI)
 - TWO PRIMARY AND ONE HIGH JEWISH SCHOOLS
 - RABBINICAL SEMINAR (KNOWN AND RECOGNIZED BY FAR).



BESIDES SEPHARDIM DECENTS OF JEWS EXPELLED FROM SPAIN, ASHKENAZI JEWS ALSO LIVED IN SARAJEVO.

THEY CAME TO THESE REGIONS FROM THE NORTHERN AND EASTERN EUROPE.

THE NUMBER OF ASHKENAZI IN BOSNIA AND HERZEGOVINA INCREASED CONSIDERABLY WHEN AUSTRO-HUNGARY OCCUPIED BOSNIA.

ON SEPTEMBER 24, 1879 THE REPRESENTATIVES OF THE ASHKENAZI LIVING IN SARAJEVO GATHERED AND MADE A DECISION TO ESTABLISH THEIR OWN RELIGIOUS COMMUNITY AND BUILD THEIR OWN SYNAGOGUE, AS WELL AS TO ENGAGE A CHAZAN TO PERFORM SERVICE ACCORDING TO THE ASHKENAZI RITE.

IN MARCH 1901, THE LOCAL GOVERNMENT OF BOSNIA AND HERZEGOVINA APPROVED ISSUANCE OF THE BUILDING PERMIT FOR CONSTRUCTION OF THE SYNAGOGUE OF "AUSTRO - HUNGARIAN ISRAELITE RELIGIOUS COMMUNITY IN SARAJEVO".

THE SARAJEVO ASHKENAZI SYNAGOGUE 1902-2002

CONSTRUCTION AND DEDICATION OF THE FIRST ASHKENAZI ASSEMBLY HOUSE IN SARAJEVO, PRESENTLY THE ONLY ACTIVE TEMPLE IN BOSNIA AND HERZEGOVINA, WAS COMPLETED ON SEPTEMBER 30TH OF 1902.

THE TEMPLE, I.E. SYNAGOGUE WAS BUILT IN PSEUDO MOORISH STYLE.

THE ARCHITECT WAS WELL KNOWN KARL PARŽIK, WHO ALSO DESIGNED NUMEROUS OTHER BUILDINGS IN SARAJEVO.

INTERIOR DECORATION OF THE SYNAGOGUE WAS DONE BY LUDWIG OISNER.

DEDICATION OF THE SYNAGOGUE WAS PERFORMED BY RABBI DR. SAMUEL VESEL.

IN SPITE OF THE FACT THAT IT WAS BUILT IN PSEUDO MOORISH STYLE WITH CHARACTERISTIC TOWERS ON ALL FOUR CORNERS AND ORNAMENTAL ADORNMENTS ON THE BUILDING FACADE,

THE SYNAGOGUE WAS A FINE FIT TO THE SETTING MOSTLY ORIENTAL IN STYLE.
THE HALLWAY FOR RELIGIOUS SERVICES HAD A SEPARATE GALLERY FOR WOMEN.

THE GALLERY RESTED ON TEN ORNAMENTED PILLARS CAST IN BRASS.

AARON HACODESH (THE ARK HOUSING **TO**RAH SCROLLS) IS PLACED TO THE EAST SIDE,
FACING JERUSALEM, AND IS SEPARATED BY A TRANSVERSAL WALL WITH A HIGH HORSHESHOE
SHAPED ARCH, WHICH EFFECTIVELY MADE THE SHRINE STAND OUT.

THE SYNAGOGUE WAS THOROUGHLY RECONSTRUCTED IN 1927 ON THE OCCASION OF
ITS 25TH ANNIVERSARY. A BUILDING TO THE WEST OF THE SYNAGOUGE WAS ADDED
IN 1933 TO HOUSE THE ADMINISTRATION OF THE ASHKENAZI JEWISH MUNICIPALITY, LIBRARIES,
AN APARTMENT FOR THE RABBI AND ACCOMMODATE OTHER SERVICES.

THE SYNAGOGUE WAS PARTITIONED ALONG ITS HEIGHT IN 1964-1965
ON THE OCCASION OF MARKING 400 YEARS OF JEWS' COMING TO BOSNIA AND HERZEGOVINA.

THE UPPER FLOOR IS USED FOR RELIGIOUS SERVICES
AND THE GROUND FLOOR FOR COMMUNAL SOCIAL LIFE.

TODAY THE JEWISH COMMUNITY SARAJEVO GATHERS ABOUT 700 MEMBERS
(SEPHARDIM AND ASHKENAZIM TOGETHER).

DANILO NIKOLIĆ,
PRESIDENT OF THE JEWISH COMMUNITY SARAJEVO

TOURISM

VISITORS ARE WELCOME TO THE SYNAGOGUE DURING OPENING HOURS
FROM 10 A.M. TO 3 P.M. EACH DAY EXCEPT SATURDAY AND SUNDAY.

THE SERVICE IN THE SYNAGOGUE IS PERFORMED ON FRIDAY EVENING
AND FOR ALL HIGH JEWISH HOLIDAYS.

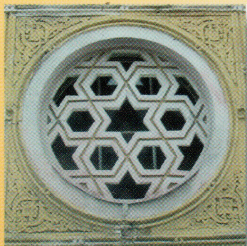
THE ADDRESS OF THE JEWISH COMMUNITY OF SARAJEVO IS :
HAMDJE KREŠEVLJAKOVIĆA STR. No. 59
TEL/FAX: (00) 387 33 663 - 472 AND 663 - 473

e-mail: la_bene@open.net.ba
[www. Open.net.ba/~la_bene](http://www.Open.net.ba/~la_bene)





ORNAMENTAL
DETAILS OF
THE WALL



JEVREJSKA OPŠTINA
SARAJEVO



JEWISH COMMUNITY
OF SARAJEVO

IZDAVAČ/PUBLISHER
JEVREJSKA OPŠTINA SARAJEVO

DIZAJN/DESIGN BY
MIHAJLO ATIJAS

FOTO/PHOTO BY
TOMO RADOVANOVIĆ

ŠTAMPA/PRINTED BY

BLICDRUK
TIRAŽ/COPIES
1000

O ISTORIJI SARAJEVSKIH JEVIJEJA ...

U OVE KRAJEVE JEVIJEJI SE MASOVNIJE NASELJAVAJU POSLIJE IZGONA IZ ŠPANIJE 1492.GODINE.

PRVI PISANI TRAG O BORAVKU JEVIJEJA U SARAJEVU POTIČE IZ 1557.GODINE.

TO JE ZAPIS U «SIDŽILU» SARAJEVSKOG ŠERIJATSKOG SUDA IZ TE GODINE.

OD TADA PA DO POČETKA II SVJETSKOG RATA, BROJ JEVIJEJA U SARAJEVU SE POVEĆAVA, DA BI KONCEM 1940.GODINE IZNOSIO OKO 11.500 DUŠA.

U SARAJEVU SU U TO VRIJEME DJELOVALE:

- DVIJE JEVIJEJSKE OPŠTINE (SEFARDSKA I AŠKENASKA)
- PET SINAGOGA (ČETIRI SEFARDSKE I JEDNA AŠKENASKA)
- DVIJE OSNOVNE I JEDNA SREDNJA JEVIJEJSKA ŠKOLA,
- RABINSKI SEMINAR (NADALEKO POZNAT I PRIZNAT).

OSIM SEFARADA (POTOMAKA JEVIJEJA PROGNAHNIH IZ ŠPANIJE) U SARAJEVU ŽIVE I AŠKENASKI JEVIJEJI, KOJI SU U OVE KRAJEVE DOŠLI IZ SJEVERNE I ISTOČNE EVROPE.

BROJ AŠKENAZA U BIH ZNATNO SE POVEĆAVA OKUPACIJOM BOSNE OD STRANE AUSTROUGARSKE.

AŠKENAZI NASTANJENI U SARAJEVU SASTALI SU SE 24.SEPTEMBRA 1879.GODINE I ODLUČILI DA OSNUJU SVOJU VJERSKU OPŠTINU I SAGRADE HRAM, KAO I DA ANGAŽUJU JEDNOG HAZANA KOJI ĆE BITI PREDMOLITELJ I OBAVLJATI SLUŽBU PO AŠKENASKOM OBREDU.

ZEMALJSKA VLADA BOSNE I HERCEGOVINE JE U MARTU 1901.GODINE ODOBRIŁA IZDAVANJE GRAĐEVINSKE DOZVOŁE ZA IZGRADNJU HRAMA "AUSTRO - UGARSKE IZRAELITSKE VJERSKE OPŠTINE U SARAJEVU".

SARAJEVSKA AŠKENASKA SINAGOGA 1902 – 2002

30.SEPTEMBRA 1902.GODINE, ZAVRŠENA JE IZGRADNJA I IZVRŠENO OSVEĆENJE

PRVOG AŠKENASKOG HRAMA U SARAJEVU, DANAS JEDINOG HRAMA U BOSNI I HERCEGOVINI.

HRAM,ODNOSNO SINAGOGA, GRAĐENA JE U PSEUDOMAURSKOM STILU.PROJEKTANT JE BIO POZNATI KARL PARŽIK, AUTOR MNOGIH ZGRADA U SARAJEVU.UNUTRAŠNJA OBRADA I OSLIKAVANJE SINAGOGE DJELO JE LUDWIGA OISNERA.

OSVEĆENJE SINAGOGE OBAVIO JE NADRABIN DR.SAMUEL VESEL.

IAKO GRAĐENA U PSEUDOMAURSKOM STILU, SA KARAKTERISTIČNE ČETIRI UGAONE KUPOLE I ORNAMENTALNIM RELJEFIMA NA FASADI ZGRADE.SINAGOGA SE ODLIČNO UKLOPILA U SREDINU,

PRETEŽNO GRAĐENU U ORIJENTALNOM STILU.

DVORANA U KOJOJ SE ODVIJA BOGOSLUŽENJE, SAGRAĐENA JE SA GALERIJOM, KOJA JE SLUŽILA ZA ŽENE. GALERIJA SE OSLANJALA NA DESET RELJEFNIH STUBOVA, IZLIVENIH OD MJEDI.



NA ISTOČNOJ STRANI , OKRENUT PREMA JERUSALEMU, SMJEŠTEN JE
ARON HAKODEŠ / ORMAR U KOME STOJI TORA /, KOJI JE ODVOJEN POPREČNIM ZIDOM
U KOJEM JE IZVEDEN VISOKI POTKOVIČASTI LUK IZ KOJEG SE EFEKTNO ISTICALO » SVETIŠTE «.
GODINE 1927, U POVODU PROSLAVE 25-GODIŠNJICE SINAGOGA, ISTA JE TEMELJITO REKONSTRUISANA,
A 1933. GODINE SA NJENE ZAPADNE STRANE SAGRAĐENA JE ZGRADA ZA SMJEŠTAJ ADMINISTRACIJE
AŠKENASKE JEVREJSKE OPŠTINE, BIBLIOTEKE, STANA ZA RABINA I OSTALE PRATEĆE SLUŽBE.
POVODOM OBILJEŽAVANJA 400-TE GODIŠNJICE DOLASKA JEVREJA U BOSNU I HERCEGOVINU,
1964-1965. GODINE, SINAGOGA JE PREGRAĐENA PO VISINI, TAKO DA JE GORNJI SPRAT
OSPOSOBLJEN ZA RELIGIJSKI ŽIVOT, A PRIZEMLJE ZA DRUŠTVENI ŽIVOT ZAJEDNICE.
DANAS J.O. U SARAJEVU BROJI OKO 700 ČLANOVA
(SEFARDA I AŠKENAZA ZAJEDNO)

DANILO NIKOLIĆ,
PREDSJEDNIK JEVREJSKE OPŠTINE SARAJEVO



TURIZAM

POSJETA SINAGOGI JE SVAKIM RADNIM DANOM
OD 10 - 15 ČASOVA (SUBOTA I NEDELJA SU NERADNI DANI).

SLUŽBA U HRAMU SE OBAVLJA PETKOM UVEČE
I ZA SVE VELIKE JEVREJSKE BLAGDANE.

ADRESA: JEVREJSKA OPŠTINA SARAJEVO
HAMDJE KREŠEVLJAKOVIĆA 59.
TEL/FAX: (00) 387 33 663 - 472, 663 - 473

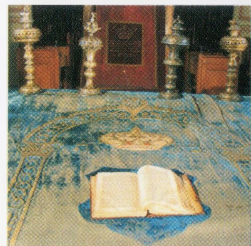
e-mail: la_bene@open.net.ba
[www. Open.net.ba/~la_bene](http://www.Open.net.ba/~la_bene)



THE "TEVA" AND "ARON HA-KODESH"

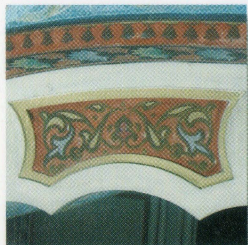


DETAILS





DETAILS OF THE
HORSHESHOE
SHAPED ARCH



VIEW OF THE MAIN ENTRANCE

ABOUT THE HISTORY OF THE SARAJEVO JEWS ...

THESE REGIONS WERE SETTLED BY JEWS ON A MORE MASSIVE SCALE AFTER EXPULSION FROM SPAIN IN 1492.

THE FIRST WRITTEN TRACE ABOUT EXISTENCE OF JEWS IN SARAJEVO COMES FROM 1557.

IT IS NOTE IN THE " CHRONICLE " OF THE SARAJEVO ISLAMIC CODE (SHARIA) FROM THE SAME YEAR.

SINCE THAT TIME TILL THE BEGINNING OF THE WORLD WAR II, THE NUMBER OF JEWS IN SARAJEVO INCREASED CONSTANTLY AND BY THE END OF 1940 THERE WERE ABOUT 11.500 JEWS IN SARAJEVO.

THE FOLLOWING INSTITUTIONS WERE ACTIVE AT THAT TIME IN SARAJEVO :

- TWO JEWISH COMMUNITIES (SEPHARDIC AND ASHKENAZI)
- FIVE SYNAGOGUES (FOUR SEPHARDIC AND ONE ASHKENAZI)
 - TWO PRIMARY AND ONE HIGH JEWISH SCHOOLS
 - RABBINICAL SEMINAR (KNOWN AND RECOGNIZED BY FAR).



BESIDES SEPHARDIM DECENTS OF JEWS EXPELLED FROM SPAIN, ASHKENAZI JEWS ALSO LIVED IN SARAJEVO.

THEY CAME TO THESE REGIONS FROM THE NORTHERN AND EASTERN EUROPE.

THE NUMBER OF ASHKENAZI IN BOSNIA AND HERZEGOVINA INCREASED CONSIDERABLY WHEN AUSTRO-HUNGARY OCCUPIED BOSNIA.

ON SEPTEMBER 24, 1879 THE REPRESENTATIVES OF THE ASHKENAZI LIVING IN SARAJEVO GATHERED AND MADE A DECISION TO ESTABLISH THEIR OWN RELIGIOUS COMMUNITY AND BUILD THEIR OWN SYNAGOGUE, AS WELL AS TO ENGAGE A CHAZAN TO PERFORM SERVICE ACCORDING TO THE ASHKENAZI RITE.

IN MARCH 1901, THE LOCAL GOVERNMENT OF BOSNIA AND HERZEGOVINA APPROVED ISSUANCE OF THE BUILDING PERMIT FOR CONSTRUCTION OF THE SYNAGOGUE OF "AUSTRO - HUNGARIAN ISRAELITE RELIGIOUS COMMUNITY IN SARAJEVO".

THE SARAJEVO ASHKENAZI SYNAGOGUE 1902-2002

CONSTRUCTION AND DEDICATION OF THE FIRST ASHKENAZI ASSEMBLY HOUSE IN SARAJEVO, PRESENTLY THE ONLY ACTIVE TEMPLE IN BOSNIA AND HERZEGOVINA, WAS COMPLETED ON SEPTEMBER 30TH OF 1902.

THE TEMPLE, I.E. SYNAGOGUE WAS BUILT IN PSEUDO MOORISH STYLE.

THE ARCHITECT WAS WELL KNOWN KARL PARŽIK, WHO ALSO DESIGNED NUMEROUS OTHER BUILDINGS IN SARAJEVO.

INTERIOR DECORATION OF THE SYNAGOGUE WAS DONE BY LUDWIG OISNER.

DEDICATION OF THE SYNAGOGUE WAS PERFORMED BY RABBI DR. SAMUEL VESEL.

IN SPITE OF THE FACT THAT IT WAS BUILT IN PSEUDO MOORISH STYLE WITH CHARACTERISTIC TOWERS ON ALL FOUR CORNERS AND ORNAMENTAL ADORNMENTS ON THE BUILDING FACADE,

THE SYNAGOGUE WAS A FINE FIT TO THE SETTING MOSTLY ORIENTAL IN STYLE.
THE HALLWAY FOR RELIGIOUS SERVICES HAD A SEPARATE GALLERY FOR WOMEN.

THE GALLERY RESTED ON TEN ORNAMENTED PILLARS CAST IN BRASS.

AARON HACODESH (THE ARK HOUSING TORAH SCROLLS) IS PLACED TO THE EAST SIDE,
FACING JERUSALEM, AND IS SEPARATED BY A TRANSVERSAL WALL WITH A HIGH HORSHESHOE
SHAPED ARCH, WHICH EFFECTIVELY MADE THE SHRINE STAND OUT.

THE SYNAGOGUE WAS THOROUGHLY RECONSTRUCTED IN 1927 ON THE OCCASION OF
ITS 25TH ANNIVERSARY. A BUILDING TO THE WEST OF THE SYNAGOUGE WAS ADDED
IN 1933 TO HOUSE THE ADMINISTRATION OF THE ASHKENAZI JEWISH MUNICIPALITY, LIBRARIES,
AN APARTMENT FOR THE RABBI AND ACCOMMODATE OTHER SERVICES.

THE SYNAGOGUE WAS PARTITIONED ALONG ITS HEIGHT IN 1964-1965
ON THE OCCASION OF MARKING 400 YEARS OF JEWS' COMING TO BOSNIA AND HERZEGOVINA.

THE UPPER FLOOR IS USED FOR RELIGIOUS SERVICES
AND THE GROUND FLOOR FOR COMMUNAL SOCIAL LIFE.

TODAY THE JEWISH COMMUNITY SARAJEVO GATHERS ABOUT 700 MEMBERS
(SEPHARDIM AND ASHKENAZIM TOGETHER).

DANILO NIKOLIĆ,
PRESIDENT OF THE JEWISH COMMUNITY SARAJEVO

TOURISM

VISITORS ARE WELCOME TO THE SYNAGOGUE DURING OPENING HOURS
FROM 10 A.M. TO 3 P.M. EACH DAY EXCEPT SATURDAY AND SUNDAY.

THE SERVICE IN THE SYNAGOGUE IS PERFORMED ON FRIDAY EVENING
AND FOR ALL HIGH JEWISH HOLIDAYS.

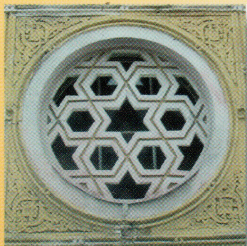
THE ADDRESS OF THE JEWISH COMMUNITY OF SARAJEVO IS :
HAMDJE KREŠEVLJAKOVIČA STR. No. 59
TEL/FAX: (00) 387 33 663 - 472 AND 663 - 473

e-mail: la_bene@open.net.ba
[www. Open.net.ba/~la_bene](http://www.Open.net.ba/~la_bene)





ORNAMENTAL
DETAILS OF
THE WALL



JEVREJSKA OPŠTINA
SARAJEVO



JEWISH COMMUNITY
OF SARAJEVO

IZDAVAČ/PUBLISHER
JEVREJSKA OPŠTINA SARAJEVO

DIZAJN/DESIGN BY
MIHAJLO ATIJAS

FOTO/PHOTO BY
TOMO RADOVANOVIĆ

ŠTAMPA/PRINTED BY

BLICDRUK
TIRAŽ/COPIES
1000